



GRAMMAR SCHOOL WALK, GLASGOW OFFERS OVER £249,995

Enjoying a fabulous setting close to the Main Street, this beautifully presented quirky villa with garden, terraced balcony and cul-de-sac setting.

Enjoying a fabulous setting close to the Main Street, this beautifully presented quirky villa with garden, terraced balcony and cul-de-sac setting.

The home was built by Barratt Homes circa 2014 and offers fresh modern decor, quality double glazing and gas central heating. Within the dining kitchen is a stainless steel gas hob, oven and extractor fan whilst the bathrooms contain modern white sanitary ware. There is access to a good sized terraced balcony from the lounge which creates further outdoor space.

The accommodation comprises lounge, modern fitted kitchen, two double bedrooms, shower room, master en suite and a modern utility space.

The floor plan shall provide you with a detailed layout of this well laid out and comfortable home, however we recommend viewing to appreciate the quality of finishings and the convenient setting that's on offer.

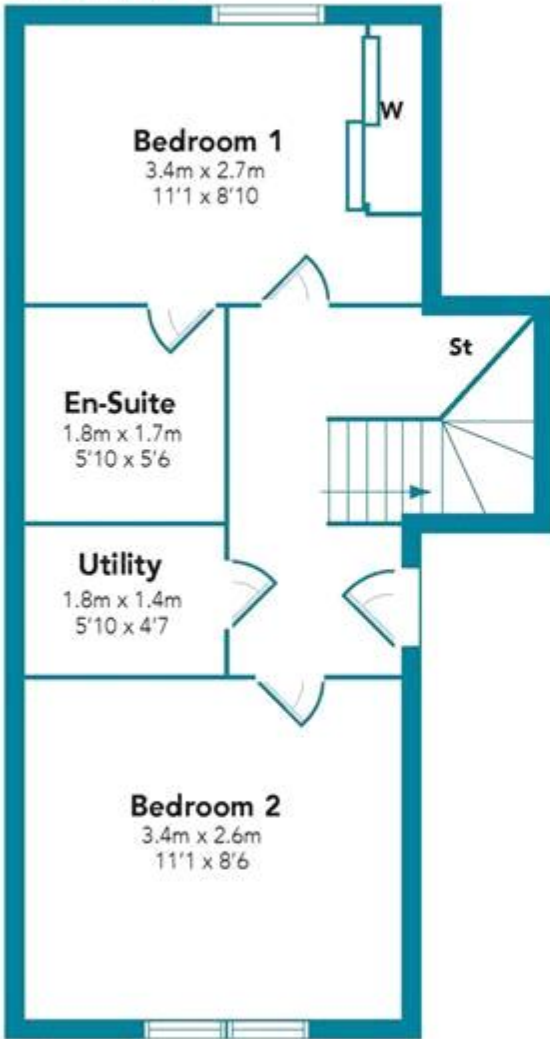
There is a substantial rear garden with a maintained lawn surrounded with fencing. The front garden is well kept with lawn. To the side of the property is parking for two cars.

Grammar School Walk was built by Barratt Homes within the grounds of the former Uddingston Grammar and is particularly centrally positioned with excellent access to Uddingston Main Street and its amenities whilst within close proximity to schooling. Uddingston is highly regarded for its excellent main street where you can find the majority of every day shopping needs. There is a great choice of restaurants, bistros and pubs, with many more found in nearby Hamilton town centre. The property is located within popular school catchments. For those commuting by public transport there are regular bus and train services from Hamilton and Uddingston to the surrounding towns.

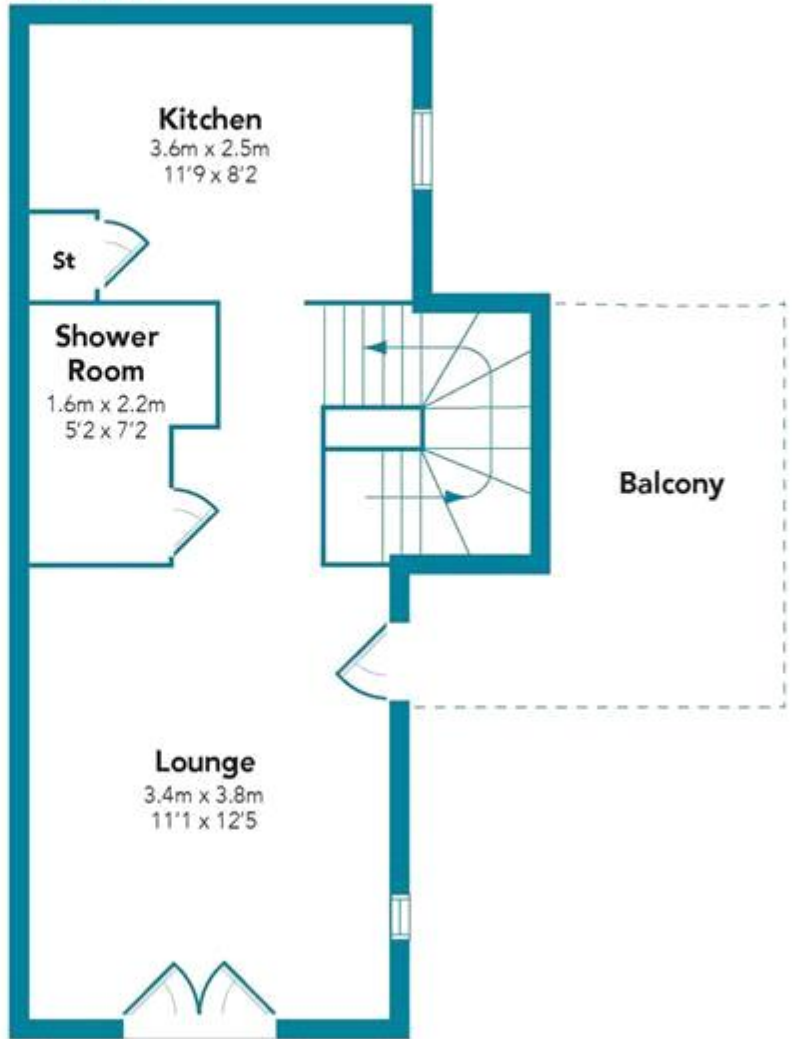


GRAMMAR SCHOOL WALK, GLASGOW
OFFERS OVER £249,995

GROUND FLOOR



FIRST FLOOR



Floorplans are indicative only - not to scale
Produced by Plush Plans Ltd

Map error: g.co/staticmaperror



Map data ©2024

Whilst every effort is made to ensure the accuracy of these details, it should be noted that the measurements are approximate only. Floorplans are for representation purposes only and prepared according to the RICS Code of Measuring Practice by our floorplan provider. Therefore, the layout of doors, windows and rooms are approximate and should be regarded as such by any prospective purchaser. Any internal photographs are intended as a guide only and it should not be assumed that any of the furniture/fitings are included in any sale. Where shown, details of lease, ground rent and service charge are provided by the vendor and their accuracy cannot be guaranteed, as the information may not have been verified and further checks should be made either through your solicitor/conveyance. Where appliances, including central heating, are mentioned, it cannot be assumed that they are in working order, as they have not been tested. Please also note that wiring, plumbing and drains have not been checked.