



## GARTCRAIG STREET, COATBRIDGE OFFERS OVER £349,995

Built by Barratt Homes and located within the desirable Fairways Estate in Coatbridge, lies this impeccably presented four-bedroom detached villa. The property for sale has been tastefully upgraded by the current owner and is presented to the market in "show home" condition throughout.

Built by Barratt Homes and located within the desirable Fairways Estate in Coatbridge, lies this impeccably presented four-bedroom detached villa. The property for sale has been tastefully upgraded by the current owner and is presented to the market in "show home" condition throughout.

On arrival, you are welcomed by a neat front lawn, a spacious mono-block driveway, and a detached garage.

Internally the accommodation comprises a grand hallway, a front-facing lounge, an open-plan luxury kitchen/spacious dining area with patio doors to the garden, a utility room, downstairs W/C, and a cloakroom.

On the upper level lies four good-sized bedrooms with a master en-suite and a modern three-piece bathroom.

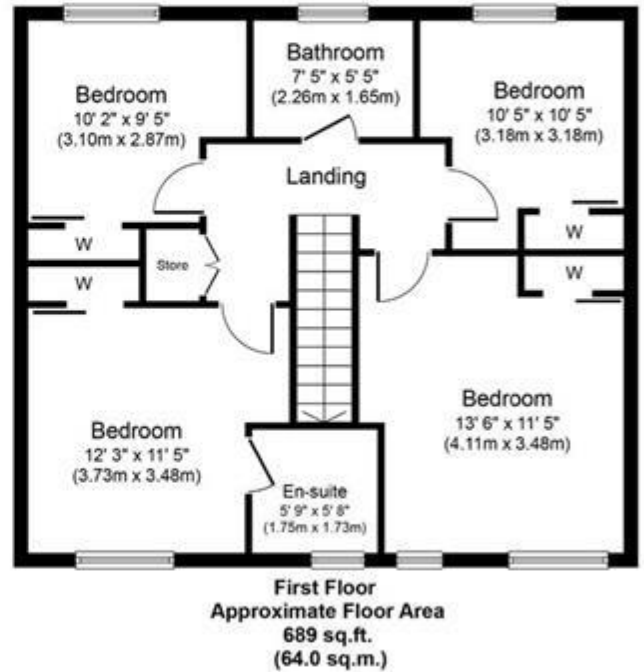
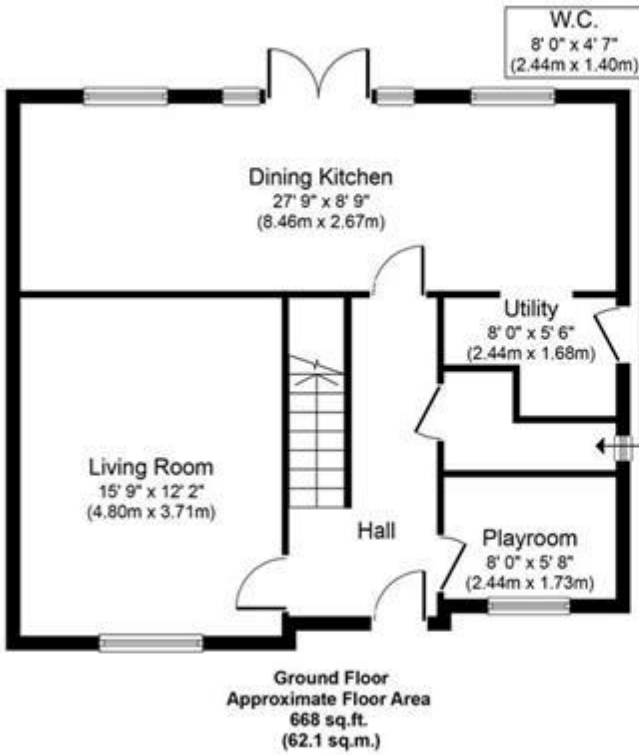
The rear garden grounds have been beautifully maintained with both patio areas and lawn. The grounds are enclosed by double slatted timber fencing and offer excellent exposure to sunlight in the summer months making them perfect for family barbecues and entertaining guests.

Within the town of Coatbridge, there is a great choice of restaurants, bistros, and pubs and for those commuting by public transport, there are regular bus and train services from Sunnyside Station to the surrounding towns and cities including Glasgow and Edinburgh. The M74 motorway provides excellent access to the central belt linking the surrounding towns and cities. Sports facilities are in abundance and include golf courses, swimming pools, gyms, and country parks with picturesque walks.





GARTCRAIG STREET, COATBRIDGE  
OFFERS OVER £349,995



Whilst every attempt has been made to ensure the accuracy of the floor plan contained here, measurements of doors, windows, rooms and any other items are approximate and no responsibility is taken for any error, omission, or mis-statement. The measurements should not be relied upon for valuation, transaction and/or funding purposes. This plan is for illustrative purposes only and should be used as such by any prospective purchaser or tenant. The services, systems and appliances shown have not been tested and no guarantee as to their operability or efficiency can be given.  
Copyright V360 Ltd 2024 | www.houseviz.com



Whilst every effort is made to ensure the accuracy of these details, it should be noted that the measurements are approximate only. Floorplans are for representation purposes only and prepared according to the RICS Code of Measuring Practice by our floorplan provider. Therefore, the layout of doors, windows and rooms are approximate and should be regarded as such by any prospective purchaser. Any internal photographs are intended as a guide only and it should not be assumed that any of the furniture/fittings are included in any sale. Where shown, details of lease, ground rent and service charge are provided by the vendor and their accuracy cannot be guaranteed, as the information may not have been verified and further checks should be made either through your solicitor/conveyance. Where appliances, including central heating, are mentioned, it cannot be assumed that they are in working order, as they have not been tested. Please also note that wiring, plumbing and drains have not been checked.