



CLYDE PLACE, GLASGOW OFFERS OVER £99,995

Kirkland Estate Agents are proud to present to the market this two bedroom upper cottage apartment, situated within a stones throw away from a popular and busy Main Street within Cambuslang.

Kirkland Estate Agents are proud to present to the market this two bedroom upper cottage apartment, situated within a stones throw away from a popular and busy Main Street within Cambuslang.

The property is on one level, and includes lounge, modern fitted kitchen, two double bedrooms, floored and lined loft space and family bathroom.

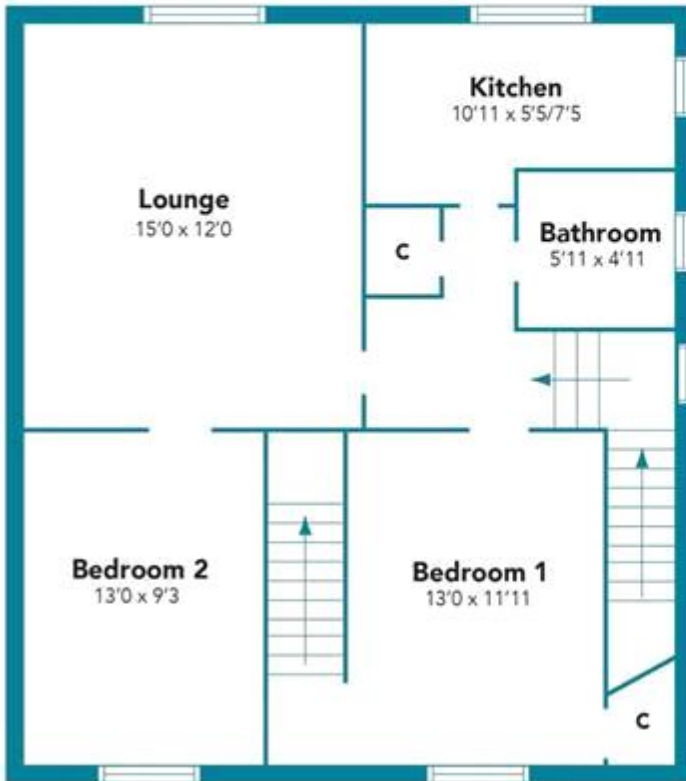
The property has to the front a large driveway, path leading to the large private gardens with a maintained lawn.

Located in the ever-popular Cambuslang, there are a wide range of amenities which surround, including good local schools and nurseries, shops, café's, supermarkets and sports and recreational facilities. Cambuslang train Station is a short walk away and there is a comprehensive motorway network nearby, including M74, M73, M77 and M8, offering excellent commuting access to all over Scotland and the South.

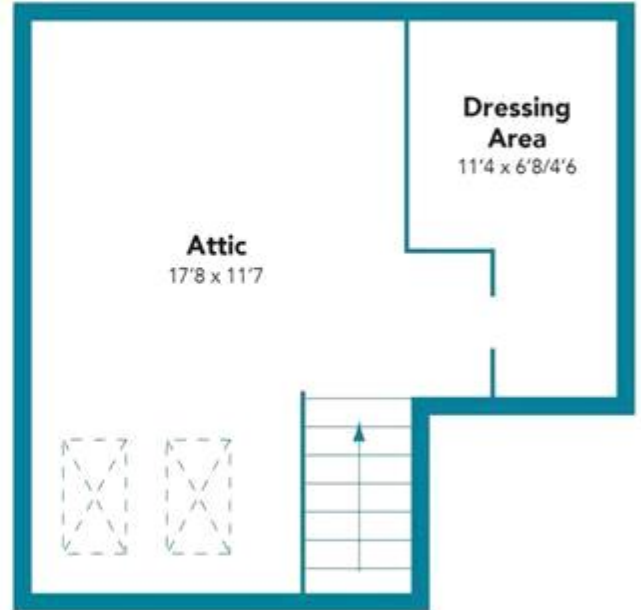


CLYDE PLACE, GLASGOW
OFFERS OVER £99,995

GROUND FLOOR



ATTIC



Floorplans are indicative only - not to scale
Produced by Plush Plans Ltd

Map error: g.co/staticmaperror



Whilst every effort is made to ensure the accuracy of these details, it should be noted that the measurements are approximate only. Floorplans are for representation purposes only and prepared according to the RICS Code of Measuring Practice by our floorplan provider. Therefore, the layout of doors, windows and rooms are approximate and should be regarded as such by any prospective purchaser. Any internal photographs are intended as a guide only and it should not be assumed that any of the furniture/fixings are included in any sale. Where shown, details of lease, ground rent and service charge are provided by the vendor and their accuracy cannot be guaranteed, as the information may not have been verified and further checks should be made either through your solicitor/conveyance. Where appliances, including central heating, are mentioned, it cannot be assumed that they are in working order, as they have not been tested. Please also note that wiring, plumbing and drains have not been checked.