



FLAT , CHALMERS COURT, MAIN STREET, UDDINGSTON, GLASGOW OFFERS OVER £135,000

Kirkland Estate Agents are proud to present to the market this seldom available ground floor apartment. Positioned extremely well within Uddingston Main Street.

The apartment occupies part of the ground floor of this modern block and is accessed via a secure door entry system.

Kirkland Estate Agents are proud to present to the market this seldom available ground floor apartment. Positioned extremely well within Uddingston Main Street.

The apartment occupies part of the ground floor of this modern block and is accessed via a secure door entry system. This property offers well laid out accommodation accessed off a particularly large entrance hall.

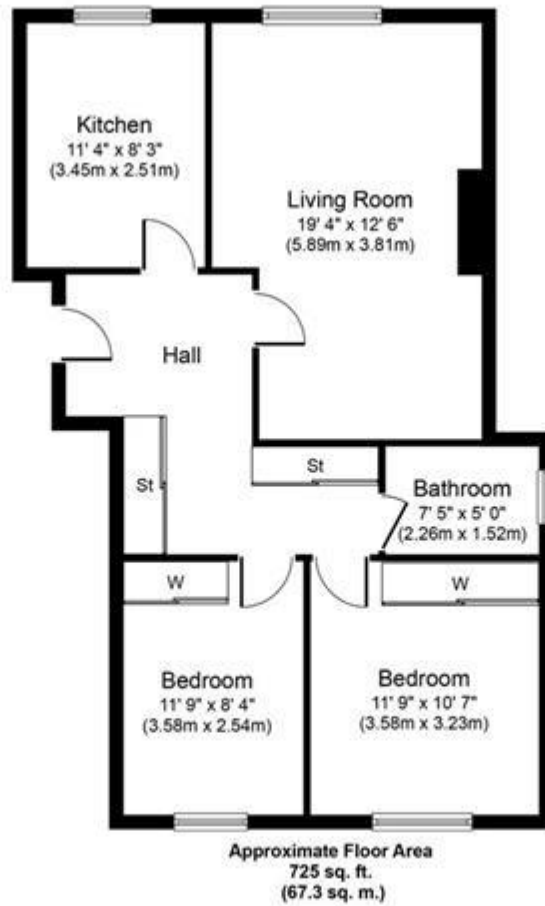
The accommodation comprises large reception hall with storage, sizeable lounge with dining space, fitted kitchen, two double bedrooms with fitted wardrobes and a shower room.

The communal gardens are well kept with lawns, bedding areas, drying greens and parking to the rear.

Uddingston is highly regarded for its excellent main street where you can find the majority of every day shopping needs. There is a great choice of restaurants, bistros and pubs, with many more found in nearby in Bothwell and Hamilton town centre. The property is located within popular school catchments and for those commuting by public transport there are regular bus and train services from Uddingston to the surrounding towns and cities including Glasgow and Edinburgh. The M74 and M8 motorways provide excellent access to the central belt linking the surrounding towns and cities. Sports facilities are in abundance and include golf courses, swimming pools, gyms and country parks with picturesque walks.



**FLAT , CHALMERS COURT, MAIN STREET, UDDINGSTON, GLASGOW
OFFERS OVER £135,000**



Whilst every attempt has been made to ensure the accuracy of the floor plan contained here, measurements of doors, windows, rooms and any other items are approximate and no responsibility is taken for any error, omission, or mis-statement. The measurements should not be relied upon for valuation, transaction and/or funding purposes. This plan is for illustrative purposes only and should be used as such by any prospective purchaser or tenant. The services, systems and appliances shown have not been tested and no guarantee as to their operability or efficiency can be given.

Copyright V360 Ltd 2024 | www.houseviz.com



Whilst every effort is made to ensure the accuracy of these details, it should be noted that the measurements are approximate only. Floorplans are for representation purposes only and prepared according to the RICS Code of Measuring Practice by our floorplan provider. Therefore, the layout of doors, windows and rooms are approximate and should be regarded as such by any prospective purchaser. Any internal photographs are intended as a guide only and it should not be assumed that any of the furniture/fittings are included in any sale. Where shown, details of lease, ground rent and service charge are provided by the vendor and their accuracy cannot be guaranteed, as the information may not have been verified and further checks should be made either through your solicitor/conveyance. Where appliances, including central heating, are mentioned, it cannot be assumed that they are in working order, as they have not been tested. Please also note that wiring, plumbing and drains have not been checked.