

WEST KIRK STREET, AIRDRIE

£650 PCM

Kirkland Letting Agents are delighted to offer to the rental market this 2 bedroom top floor apartment situated in the town of Airdrie.

Kirkland Letting Agents are delighted to offer to the rental market this 2 bedroom top floor apartment situated in the town of Airdrie.

The property comprises reception hallway, a large lounge area, modern fitted kitchen, two double bedrooms and a modern shower room.

Further benefits gas central heating, double glazed windows and private garden to the rear.

Airdrie has the majority of every day shopping needs. There is a great choice of restaurants, bistros, pubs. The property is located within popular school catchments. For those commuting by public transport there are regular bus and train services from Airdrie to the surrounding towns and cities including Glasgow and Edinburgh. The M74 motorway provides excellent access to the central belt linking the surrounding towns and cities.

EPC Rating D58

Council Tax Band A

Landlord Registration Number: Pending

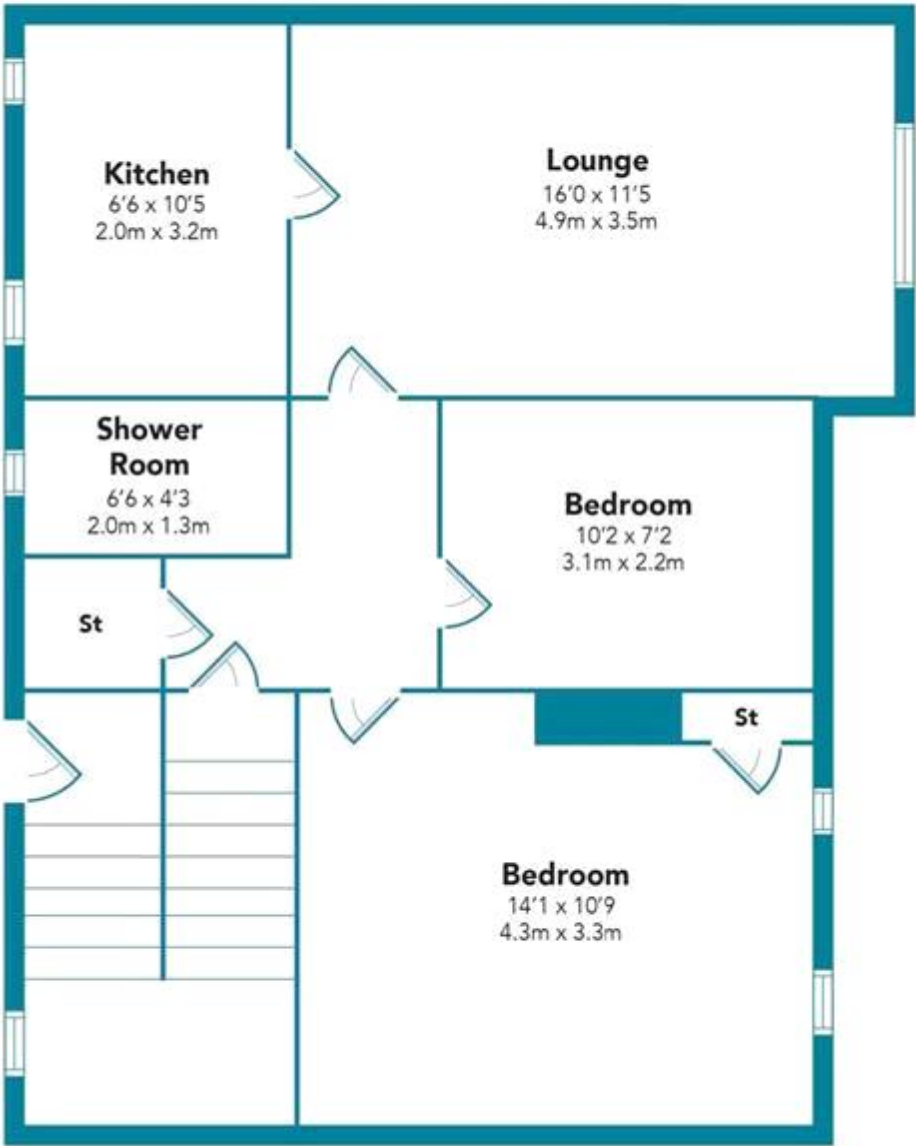
Scottish Lettings Agent Registration Number: LARN2305008

Council Tax Band: A (North Lanarkshire Council)

Deposit: £750



WEST KIRK STREET, AIRDRIE
£650 PCM



Floorplans are indicative only - not to scale
Produced by Plush Plans Ltd

Energy Efficiency Rating		Current	Potential
<i>Very energy efficient - lower running costs</i>			
(92-100) A			
(81-91) B			
(69-80) C			
(55-68) D		58	75
(39-54) E			
(21-38) F			
(1-20) G			
<i>Not energy efficient - higher running costs</i>			
Scotland	EU Directive 2002/91/EC		

The energy efficiency rating is a measure of the overall efficiency of a home. The higher the rating the more energy efficient the home is and the lower the fuel bills will be.



Whilst every effort is made to ensure the accuracy of these details, it should be noted that the measurements are approximate only. Floorplans are for representation purposes only and prepared according to the RICS Code of Measuring Practice by our floorplan provider. Therefore, the layout of doors, windows and rooms are approximate and should be regarded as such by any prospective tenant.